

SHOSHA/FL

EY353

LED FLOODLIGHT

MSC

Football Field, Johor

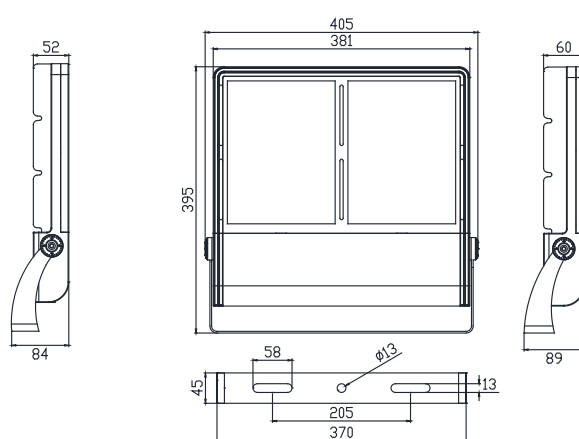
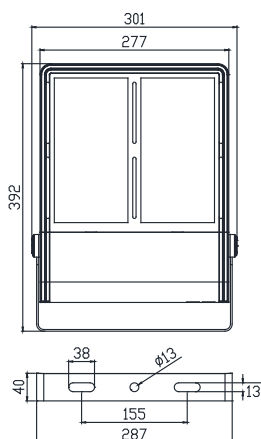
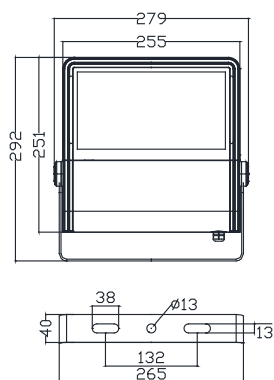


EY353-50W • 70W

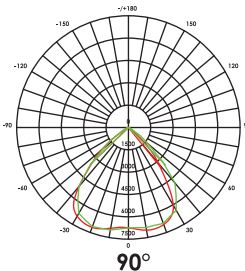
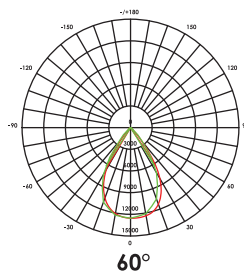
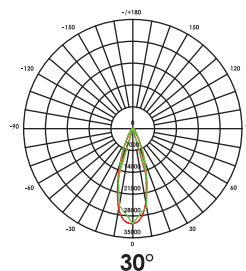
EY353-100W

EY353-150W • 220W

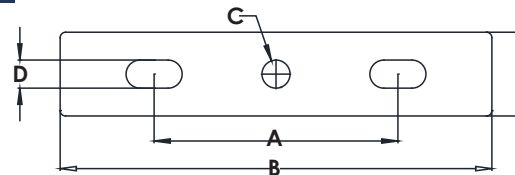
PRODUCT DIMENSION



PHOTOMETRY/BEAM ANGLE



BRACKET MOUNTING INFO



Model	Bracket Mounting Dimension (mm)				
	A	B	C	D	E
50W	132	265	Ø 13	13	40
70W	132	265	Ø 13	13	40
100W	155	287	Ø 13	13	40
150W	205	370	Ø 13	13	45
220W	205	370	Ø 13	13	45

MODEL NO.	EY353-50W	EY353-70W	EY353-100W	EY353-150W	EY353-220W
Power Consumption $\pm 5\%$ (W)	50W	70W	100W	150W	220W
Luminaire Flux $\pm 5\%$ (lm)	6,500 lm	9,100 lm	13,500 lm	20,250 lm	30,800 lm
System Efficacy $\pm 5\%$ (lm/W)	130 lm/W	130 lm/W	135 lm/W	135 lm/W	140 lm/W
Power Factor (PF)	0.95	0.95	0.95	0.95	0.95
HID Equivalent	100W	150W	250W	400W	400W
Internal Built-in Surge Protection Devices (kV)	4kV	4kV	6kV	6kV	6kV
Net Weight (kg)	3.20	3.20	4.70	6.60	6.80
Gross Weight (kg)	3.70	3.70	5.35	7.35	7.55
Product Dimension, L x W x H (mm)	292 x 279 x 85	292 x 279 x 85	392 x 301 x 84	395 x 405 x 89	395 x 405 x 89
Carton Dimension, L x W x H (mm)	350 x 320 x 130	350 x 320 x 130	450 x 355 x 130	455 x 455 x 125	455 x 455 x 125
CBM (m ³)	0.015	0.015	0.021	0.026	0.026

Note: The above specified lumen and system efficiency based on standard CCT: 5000K

TECHNICAL SPECIFICATION

ELECTRICAL SYSTEM

- **Input Voltage** : 100 - 240Vac, 50/60Hz
- **Insulation Class** : Class I
- **LED Driver** : Meanwell ELG/XLG IP67 (100W-220W)
Sosen H-Series (50W-70W)

LIGHT SOURCE / OPTIC

- **LED Type** : SMD 5050 with TM21 and LM80
- **Color Temperature (CCT)** : Standard 6000K
(3000K and others upon request)
- **Color Rendering Index (CRI)** : Ra > 70
(Ra > 80, 90 upon request)
- **Life Time Residual Flux** : (L70), >50,000 hours @ Ta : 50°C
- **Optical System** : 30°, 60° & 90° (4 in 1 lens)
(Other professional lens available upon request)
- **Protective Cover** : Clear Tempered Glass
- **Working Temperature** : Ta : -30°C to +50°C

APPLICATION

- Facade • Security • Signboard Lighting • Underpass
- Sport Lighting • Perimeter Lighting • Landscape

CERTIFICATION AND COMPLIANCE TEST

- **Type Test Certified (Luminaire)** : MS IEC 60598-1
: MS IEC 60598-2-5, IEC 62471
: EN 62493
- **EMC Certified** : EN 61000-3-2, EN 61000-3-3
: EN 55015, EN 61547
- **LED Compliance Test** : IESNA LM-80
: TM-21
- **Ingress Protection Test** : IEC 60529 (IP66)
- **Impact Resistance Test** : IEC 62262 (IK08)
- **RoHS** : IEC 62321

FIXTURE/HOUSING

- **Ingress Protection (IP)** : IP66
- **Impact Resistance (IK)** : IK08
- **Housing Material** : ADC 12 Die Cast Aluminium
- **Housing Finish** : Akzo Nobel Epoxy
Powder Coating - Dark Grey

OPTIONAL FEATURES/ACCESSORIES

- Motion Sensor
- DALI / 1-10V Dimming Control
- IoT Smart Lighting Control